

Better farming train 1928-29



Walker's Bank, Post Office, Taverner's: Dahl & Kruse, Butcher's Shop



West end Dayman Street - Bakers, Bush Nurse & Church



Staff at Cowangie Railway Station 1920's

Cowangie Post Office 1912

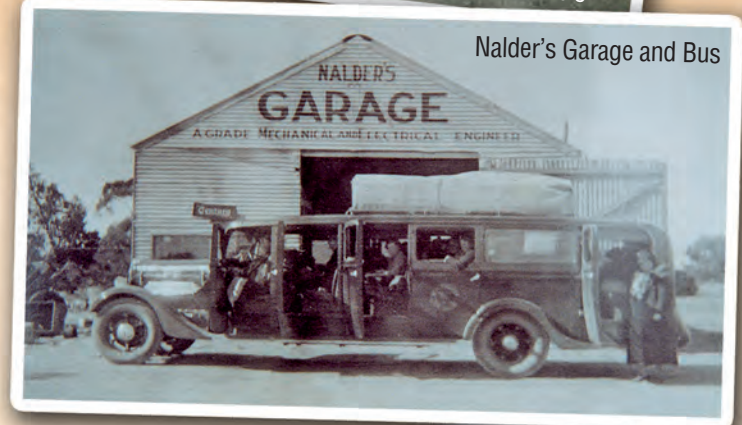
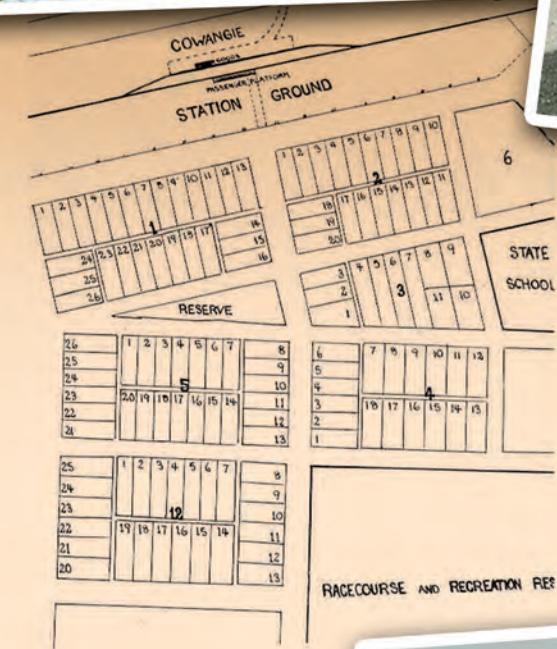


COWANGIE

From the beginning of occupation of the Kow Plains Lease, there was controversy over the spelling of "Kow" or "Cow" Plains. Some linguists substitute "K" for "C" in spelling aboriginal words. Cow or Kow simply means white and applies to the gypsum or "Copi" found in the area.

When the township of Cowangie was first established the Railway Standing Committee insisted in spelling it Kow Plains. This remained the official name for some time, but some still spelt it Cow Plains, and for a short time the town was called "Copi". The lands department finally asserted itself and ignored the old name altogether. From then on it appears only the name Cowangie was used.

The railway line reached Cowangie in February 1912 and the first town blocks were sold on the 2nd July 1912 for between £16 and £31, the average price being £28.18. Town business opened up shortly after this.



Nalder's Garage and Bus



Cowangie Bank



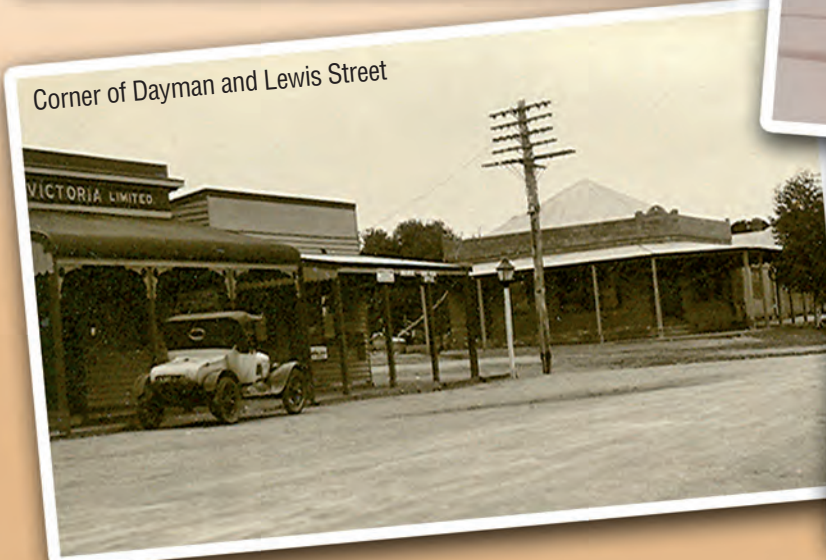
Kelly's Garage



Stewart's Butcher Shop



Cowangie Railway Station 1920's



Corner of Dayman and Lewis Street



Craigie's Store 1920s



East end of Dayman Street



Harley's Store 1920s